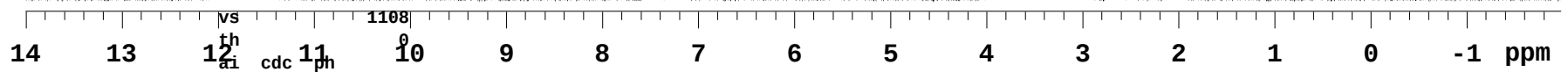


GBR12909dihydrochloride
 Filename: GBR12909dihydrochloride-proton
 _dms0-1



exp1 PROTON

SAMPLE		PRESATURATION	
date	Jan 21 2019	satmode	n
solvent	dms0	wet	n
file	exp	SPECIAL	
ACQUISITION		temp	not used
sw	4793.9	gain	38
at	3.900	spin	not used
np	37392	hst	0.008
fb	not used	pw90	15.000
bs	4	alfa	10.000
d1	5.000	FLAGS	
nt	32	il	n
ct	32	in	n
TRANSMITTER		dp	y
tn	H1	hs	nn
sfrq	299.940	PROCESSING	
tof	332.4	lb	0.10
tpwr	60	fn	65536
pw	5.000	DISPLAY	
DECOUPLER		sp	-592.8
dn	C13	wp	4793.7
dof	0	rfl	592.9
dm	nnn	rfp	0
decwave	W40_HCN5mm	rp	-118.1
dpwr	45	lp	-86.4
dmf	13100	PLOT	
		wc	234
		ec	8



GBR12909dihydrochloride
 Filename: GBR12909dihydrochloride-proton_dms0-1

Sample Name:

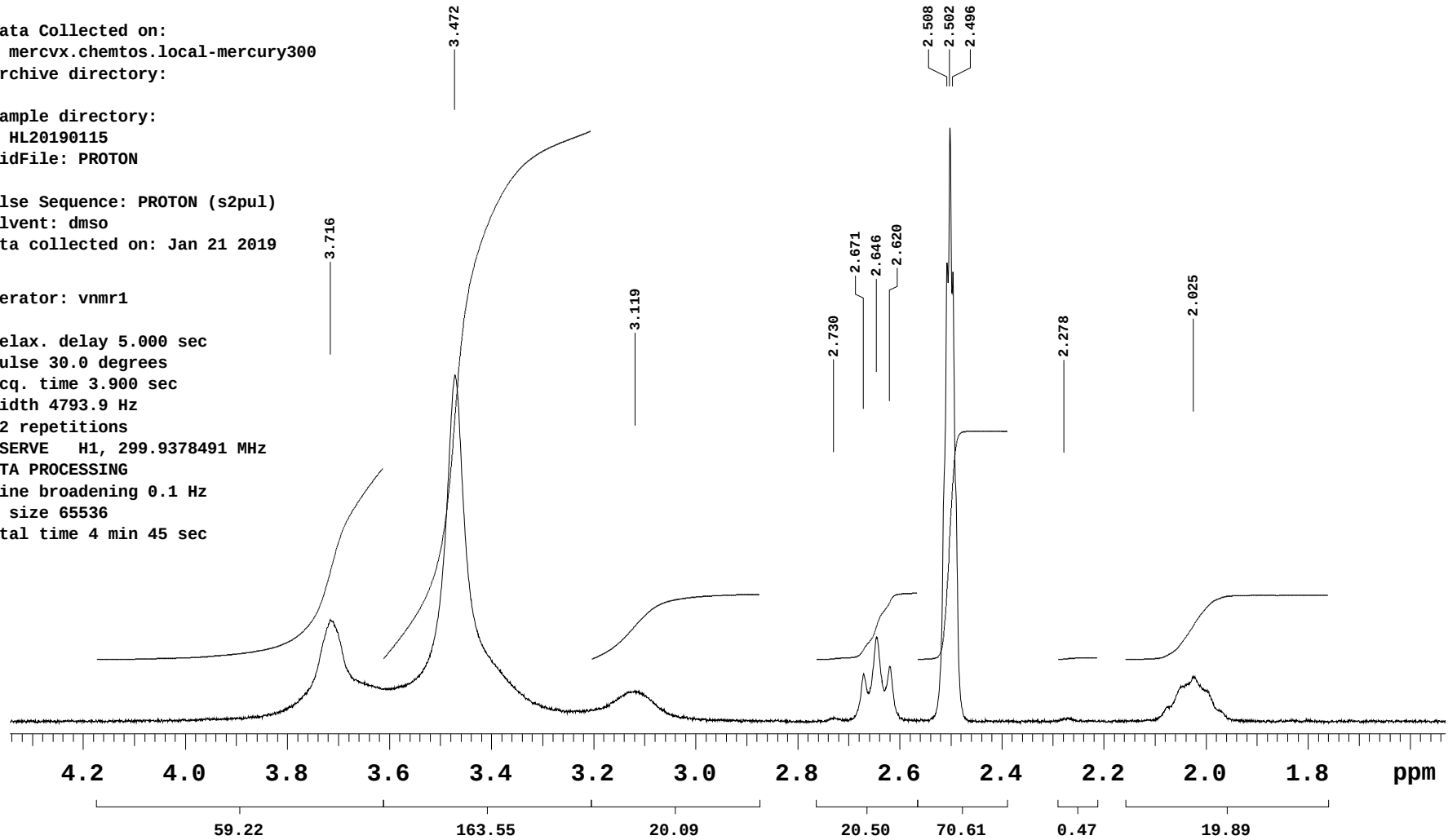
Data Collected on:
 mercvx.chemtos.local-mercury300
 Archive directory:

Sample directory:
 HL20190115
 FidFile: PROTON

Pulse Sequence: PROTON (s2pu1)
 Solvent: dms0
 Data collected on: Jan 21 2019

Operator: vnmr1

Relax. delay 5.000 sec
 Pulse 30.0 degrees
 Acq. time 3.900 sec
 Width 4793.9 Hz
 32 repetitions
 OBSERVE H1, 299.9378491 MHz
 DATA PROCESSING
 Line broadening 0.1 Hz
 FT size 65536
 Total time 4 min 45 sec



GBR12909dihydrochloride
 Filename: GBR12909dihydrochloride-proton_dms0-1

Sample Name:

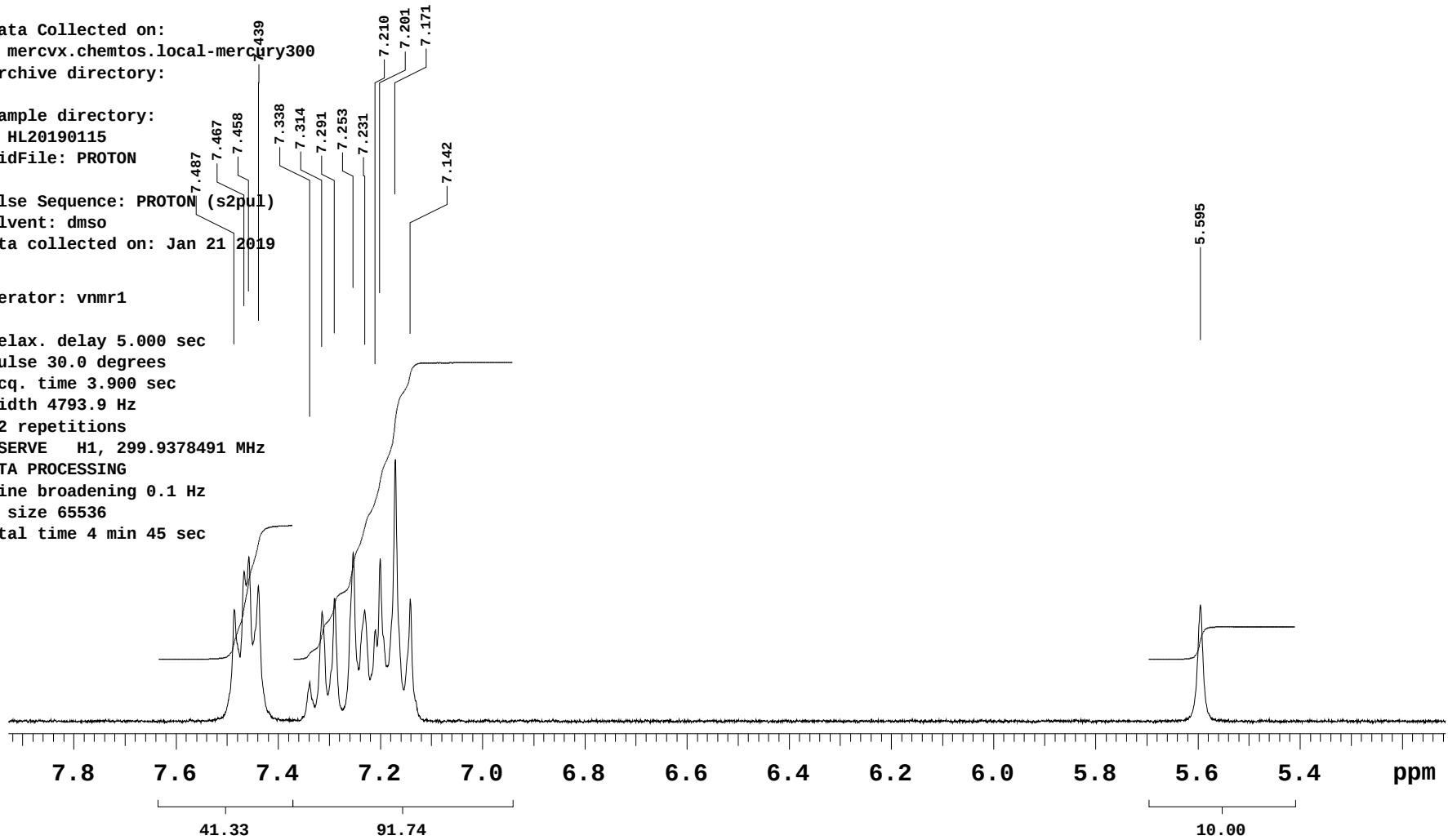
Data Collected on:
 mercvx.chemtos.local-mercury300
 Archive directory:

Sample directory:
 HL20190115
 FidFile: PROTON

Pulse Sequence: PROTON (s2pul)
 Solvent: dms0
 Data collected on: Jan 21 2019

Operator: vnmr1

Relax. delay 5.000 sec
 Pulse 30.0 degrees
 Acq. time 3.900 sec
 Width 4793.9 Hz
 32 repetitions
 OBSERVE H1, 299.9378491 MHz
 DATA PROCESSING
 Line broadening 0.1 Hz
 FT size 65536
 Total time 4 min 45 sec



GBR12909dihydrochloride
 Filename: GBR12909dihydrochloride-proton
 _dms0-1



exp1 PROTON

SAMPLE		PRESATURATION	
date	Jan 21 2019	satmode	n
solvent	dms0	wet	n
file	exp	SPECIAL	
ACQUISITION		temp	not used
sw	4793.9	gain	38
at	3.900	spin	not used
np	37392	hst	0.008
fb	not used	pw90	15.000
bs	4	alfa	10.000
d1	5.000	FLAGS	
nt	32	il	n
ct	32	in	n
TRANSMITTER		dp	y
tn	H1	hs	nn
sfrq	299.940	PROCESSING	
tof	332.4	lb	0.10
tpwr	60	fn	65536
pw	5.000	DISPLAY	
DECOUPLER		sp	-592.8
dn	C13	wp	4793.7
dof	0	rfl	592.9
dm	nnn	rfp	0
decwave	W40_HCN5mm	rp	-118.1
dpwr	45	lp	-86.4
dmf	13100	PLOT	
		wc	234
		sc	8
		vs	1108
		th	0
		ai	cdc ph

